



# MER KRETE

Tile & Stone  
Installation Systems

**Product Catalog**

**PAREX**USA

## OVER 45 YEARS EXPERIENCE

Since 1971, Merkrete has successfully provided over one billion square feet of tile and stone installation systems. Merkrete has become one of the tile market's most respected brands for innovation, technical knowledge and unique products for commercial and residential installations.

## A COMPLETE SOLUTION

Bottom to top, we've got you covered — from underlayment material to grouts, Merkrete products offer one of the most complete and diversified tile and stone installation solutions in the industry.

**Surface Preparation:** Merkrete's patching, self-leveling and underlayment products are specifically designed to prepare and repair surfaces so that they provide an acceptable foundation for the installation of tile and stone.

**Waterproofing and Crack Isolation:** Composed of low VOC modified elastomeric copolymers, Merkrete's waterproofing membranes are 100% waterproof and limit the transfer of substrate cracks to the finished tile or stone surface. Merkrete's Fracture Guard products are the most recognized and respected crack isolation membrane solutions in the tile and stone industry today.

**Mortars and Adhesives:** Merkrete's full line of polymer modified Portland cement mortars and adhesives have been formulated for a wide variety of applications such as large and heavy tile, rapid-setting installations and more.

**Grouts:** Merkrete offers several types of grouts from traditional Portland cement products to 100% solids epoxy. Complete with a vast array of today's colors and innovations such as ProGrout, Duracolor and Integra, the grout family has emerged as one of the industry's full line solutions for any type of grouting job.

**Additives:** Merkrete additives are designed to improve performance of Merkrete products such as increased setting times, stronger bond strengths and surface treatments.



## MERKRETE TILE & STONE INSTALLATION SYSTEMS PRODUCT CATALOG

### Table of Contents

---

SURFACE PREPARATION	4-5
CRACK ISOLATION / WATERPROOFING	6-7
SETTING MATERIALS	8-11
GROUT	12-13
PRIMERS	14-15
MAINTENANCE	16
COVERAGE CHARTS	17
GROUT COLOR COLLECTION	18-19
PRODUCT CHARTS	20-21
WARRANTY	22
MOBILE APP / WEBSITE / SOCIAL MEDIA	23





## PRO PATCH PLUS

A quick setting polymer modified skim coating compound for repairing, finishing and smoothing interior and exterior subfloors.

- Ideal for patching and leveling from featheredge to 1/2"
- Initial set in 1/2 hour
- Embossed floor leveler
- Compatible bond with all floor covering adhesives

Item Code	Product	Size
2528	ME Pro Patch Plus	25 lb. Bag



## PRO PATCH AL1

A fast setting high-end polymer modified skim coat compound specifically formulated to smooth and finish substrates prior to the installation of luxury vinyl tiles, resilient sheet goods, vinyl composition tile (VCT), carpet and glued-down installation of floor coverings, ceramic tile, and stone.

- Ideal for patching and leveling from featheredge to 1"
- Fast setting
- Ideal for vinyl (VCT), carpet, glued-down floor coverings, ceramic tile, and stone.
- Embossed floor leveler

Item Code	Product	Size
3630	ME Pro Patch AL1	10 lb. Box



## PRO PATCH XF

A fast setting, extra fine patching compound for finishing and smoothing of interior subfloors.

- Ideal for patching and leveling from featheredge to 1/4"
- Fast setting
- Ideal for vinyl (VCT), carpet, glued-down floor coverings, ceramic tile, and stone tiles.
- Mix with 150 Latex Additive for a high-strength system

**Item Code: 3133    Size: 25lb. Bag**

Item Code	Product	Size
3133	ME Pro Patch XF	25 lb. Bag





## UNDERLAY C

Provides an acceptable surface for floor coverings such as vinyl, it can also be used to repair concrete surfaces. Ideal for achieving a slope base foundation for drainage such as showers, drainage under exterior elastomeric deck coatings, or any floor requiring slope for drainage purposes.

- May be installed from 1/8" to 3"
- Easy to install by screed or trowel for a smooth and uniform finish
- Excellent bond to concrete, wood and metal with minimal preparation
- Cures quickly in 6 – 8 hours

Item Code	Product	Size
1879	ME Underlay C	50 lb. Bag



## UNDERLAY RS

A fast-setting, troweled polymer modified underlayment designed to provide a suitable surface for floor coverings such as vinyl, resilient tile, carpet, ceramic and stone tile. Ideal for achieving a slope base foundation for any floor requiring a slope.

- May be installed from 1/8" to 3"
- Easy to install by screed or trowel for a smooth and uniform finish
- Excellent bond to concrete, wood and metal with minimal preparation
- Cures quickly in 2 – 4 hours

Item Code	Product	Size
1885	ME Underlay RS	50 lb. Bag



## UNDERLAY SLU

A Portland cement based pourable, pumpable and free-flowing underlayment for rapid leveling of interior substrates. Underlay SLU is specifically formulated to smooth out and level substrates with excellent durability, and is acceptable for the installation of all floor coverings.

- Ideal for leveling from featheredge to 3/4" thickness
- Quick-setting
- Easy to use and apply

Item Code	Product	Size
1886	ME Underlay SLU	50 lb. Bag



## SELF LEVELING PRIMER

A uniquely formulated emulsion that must be applied to all substrates prior to the application of Merkrete's Underlay SLU to achieve proper bond.

- Increases bond strength
- Inhibits rapid water loss
- Easy to apply

**Item Code: 1883    Size: 1 Gallon Jug**

Item Code	Product	Size
1883	ME SELF LEVELING PRIMER	1 gal. Jug



## FRACTURE GUARD **FD**

A low VOC, fast drying crack isolation membrane for same day tile installations. It provides a thin protection layer to inhibit substrate crack transfers up to 1/8". Fracture Guard FD conforms to any shape or pattern allowing endless architectural designs.

- Fast drying formula
- Isolates cracks up to 1/8"
- Can be applied with a brush, roller or trowel
- Exceeds ANSI A118.12 for Crack Isolation

Item Code	Product	Size
1779	ME Fracture Guard FD	3.5 gal. Pail



## FRACTURE GUARD

The first liquid applied membrane to provide crack isolation up to 1/8". It offers maximum protection for your tile and stone installation by inhibiting the transfer of cracks from the substrate to the ceramic, porcelain or stone tile. It is ultra-flexible with an elongation over 1000%.

- Adheres to all common surfaces
- Isolates cracks up to 1/8"
- Can be applied with a brush, roller or trowel
- Exceeds ANSI A118.12 for Crack Isolation

Item Code	Product	Size
3139	ME Fracture Guard	3.5 gal. Pail



## FRACTURE GUARD **UCM**

A geometrically configured polyethylene uncoupling membrane that separates the floor base from the tile floor finish preventing crack transfer.

- Contains an internal waterproof layer that stops moisture from transferring in both directions.
- The mat's design locks in at every point of contact with mortar
- Long term floor durability

Item Code	Product	Size
3455-UCM	ME Fracture Guard Uncoupling Mat	323 sq. ft Roll
3454-UCM	ME Fracture Guard Uncoupling Mat	108 sq. ft Roll





## HYDRO GUARD SP1

A fast-drying thin, load-bearing waterproof and crack isolation membrane composed of modified elastomeric copolymers.

- Dries faster than typical waterproofing products
- Water and vapor proof
- Water (flood) test after 4 – 6 hour cure
- Exceeds ANSI A118.10 and A118.12

Item Code	Product	Size
1807	ME Hydro Guard SP1	5 gal. Pail



## HYDRO GUARD 2000

A heavy duty, thin, modified elastomeric copolymer with excellent elongation properties and high strength.

- Dries faster than typical products
- Water and vapor proof
- Isolates cracks up to 1/8"
- Exceeds ANSI A118.10 and A118.12

Item Code	Product	Size
1797	ME Hydro Guard 2000	2 gal. Pail
1798	ME Hydro Guard 2000	5 gal. Pail



## HYDRO GUARD 1

A liquid membrane for use in commercial buildings, residential housing and other areas requiring

- Adheres to all common surfaces
- Water and vapor proof
- Isolates cracks up to 1/8"
- Exceeds ANSI A118.10 and A118.12

Item Code	Product	Size
1802	ME Hydro Guard 1	1 gal. Pail
2591	ME Hydro Guard 1	3.5 gal. Pail



## BFP SYSTEM

A waterproofing membrane system is used for severe exposures, heavy duty and high traffic installations.

- Completely waterproof with zero porosity
- Isolates cracks up to 1/8"
- May be turned up for base flashing and applied to walls for wainscot or shower wall application
- Exceeds ANSI A118.10 and A118.12

Item Code	Product	Size
1736	ME BFP Emulsion	5 gal. Pail
1737	ME BFP Filler	40 lb. Bag
1738	ME BFP Membrane	5 gal. Pail





# 720 RS

A rapid setting, polymer modified mortar offers high performance and flexibility designed to meet the demands of setting large and heavy tile and stone for fast track commercial or residential installations.

- For use in time critical installations
- Allows for grout in as little as 3 hours and light traffic in 4 hours
- Excellent for tile repairs and small applications
- Exceeds ANSI A118.4 and A118.11

Item Code	Product	Color	Size
3334	ME 720 Rapid Set	Gray	50 lb. Bag
3333	ME 720 Rapid Set	White	50 lb. Bag



# 750 RS

A rapid setting mortar offering flexibility and higher strengths for the interior and exterior installation of ceramic and porcelain tile, and stone on both residential and commercial projects.

- For use in time critical installations
- Allows for grout in as little as 3 hours and light traffic in 4 hours
- Excellent for tile repairs and small applications
- Exceeds ANSI A118.4 and A118.11

Item Code	Product	Color	Size
3312	ME 750 Rapid Set	Gray	25 lb. Bag
3311	ME 750 Rapid Set	White	25 lb. Bag



# 760 HIGH FLEX

A high performance grade latex Portland cement thin set mortar with flexibility, high shear bond strengths, extended open times and adjustability. Formulated to install ceramic, porcelain tile, and natural stone to a variety of substrates, specifically hard-to-bond-to surfaces.

- Superior adhesion to a wide variety of substrates including hard-to-bond-to plywood
- Absorbs 1/16" (1.6 mm) in-plane movement
- Easy to trowel mortar assures proper coverage
- Exceeds ANSI A118.4, A118.11 and A118.15

Item Code	Product	Color	Size
3655	ME 760 High Flex	Gray	50 lb. Bag
3654	ME 760 High Flex	White	50 lb. Bag







## 820 MERLITE

Offers high bond strength in a lightweight formula with excellent handling characteristics for a wide variety of floor and wall tile installations. Merlite is 40% lighter than traditional mortars and is an excellent choice for setting large and heavy tile and stone.

- Non-slump - for use with large and heavy tile and natural stone
- Non-sag and non-slip formula holds wall tiles in place
- 30 lbs. of lightweight material covers the same area as 50 lbs. of traditional mortar
- Exceeds ANSI A118.4, A118.11 and A118.15

Item Code	Product	Color	Size
1725	ME 820 Merlite	Gray	30 lb. Bag
1726	ME 820 Merlite	White	30 lb. Bag



## 855 XXL

A polymer modified Portland cement mortar for installing extra large and heavy porcelain, ceramic tile and natural stone on both walls and floors.

- High bond strength and initial grab
- Non-sag and non-slip formula holds wall tiles in place
- Non-slump - for use with large and heavy tile and natural stone
- Exceeds ANSI A118.4, A118.11 and A118.15

Item Code	Product	Color	Size
1729	ME 855 XXL	Gray	50 lb. Bag
1730	ME 855 XXL	White	50 lb. Bag



## 856 XLF

A polymer modified, full contact Portland cement mortar for installing extra large and heavy porcelain, ceramic tile and natural stone on floors without the need of back buttering the tile by offering full mortar transfer to the back of the tile.

- High performance full contact mortar
- Non-slump - for use with large and heavy tile and natural stone
- Exceeds ANSI A118.4, A118.11 and A118.15

Item Code	Product	Color	Size
1731	ME 856 XLF	Gray	50 lb. Bag
1732	ME 856 XLF	White	50 lb. Bag



## 720 MARBLE PRO

A polymer modified Portland cement mortar for installing large and heavy porcelain, ceramic tile and natural stone on both walls and floors.

- Non-slumping and high bond strength
- For use with large and heavy tile and natural stone
- Exceeds ANSI A118.4 and A118.11

Item Code	Product	Color	Size
1707	ME 720 Marble Pro	Gray	50 lb. Bag
1710	ME 720 Marble Pro	White	50 lb. Bag



## 705 PRO SET PLUS

A professional grade thin set mortar for installing porcelain, ceramic tile and stone to walls or floors in either commercial or residential applications.

- For standard tile and stone installations
- Bonds to cement and exterior-grade plywood surfaces
- Exceeds ANSI A118.4 and A118.11

Item Code	Product	Color	Size
1701	ME 705 Pro Set Plus	Gray	50 lb. Bag
1702	ME 705 Pro Set Plus	White	50 lb. Bag
DUSTLESS (West Region Only)			
4301	ME 705 Pro Set Plus DLT	Gray	50 lb. Bag
4302	ME 705 Pro Set Plus DLT	White	50 lb. Bag



## 710 PREMIUM SET PLUS

A professional grade thin set mortar designed for interior and exterior floor and wall installations of all types of ceramic tiles, porcelain tile and stone over concrete, exterior glue plywood and a variety of substrates.

- Higher bond strengths for tile and stone installations
- Bonds to cement and exterior-grade plywood surfaces
- Exceeds ANSI A118.4 and A118.11

Item Code	Product	Color	Size
1704	ME 710 Premium Set Plus	Gray	50 lb. Bag
1705	ME 710 Premium Set Plus	White	50 lb. Bag
DUSTLESS (West Region Only)			
1720	ME 7D10 Dustless	Gray	50 lb. Bag
1721	ME 7D10 Dustless	White	50 lb. Bag



## 735 PREMIUM FLEX

A superior grade, polymer modified flexible thin set mortar offering flexibility, higher strength, plus extended adjustability and open times.

- High flexibility to prevent cracks in tile
- Excellent bond strengths
- Exceeds ANSI A118.4 and A118.11

Item Code	Product	Color	Size
1711	ME 735 Premium Flex	Gray	50 lb. Bag
1712	ME 735 Premium Flex	White	50 lb. Bag





## 210/211 SYSTEM

200 Krete Latex and 211 Krete Filler powder, is a two component superior grade polymer modified Portland cement flexible thin set mortar for installing ceramic tile and natural stone.

- Excellent adhesion properties
- Water, shock and weather resistance
- Use for demanding exterior facade installations
- Exceeds ANSI A118.4

Item Code	Product	Color	Size
1774	ME 211 Krete Filler	Gray	50 lb. Bag
1775	ME 211 Krete Filler	White	50 lb. Bag
1697	ME 200 Krete Latex		5 gal. Jug



## 700 PREMIUM SET

A standard grade, non-modified thin set mortar for installing ceramic and stone tile on walls and floors.

- For basic installations
- Exceeds ANSI A118.1

Item Code	Product	Color	Size
1698	ME 700 Premium Set	Gray	50 lb. Bag
1699	ME 700 Premium Set	White	50 lb. Bag



## 703 THIN SET

A professional grade, polymer-modified thin set mortar that delivers good bond strengths for basic tile and natural stone installations over most common types of surfaces.

- For basic installations
- Bonds to cement and exterior-grade plywood surfaces
- Exceeds ANSI A118.4 and A118.11

Item Code	Product	Color	Size
3087	ME 703 Thin Set	Gray	50 lb. Bag
3088	ME 703 Thin Set	White	50 lb. Bag

*\*Available East and Central Regions Only*



## 136 SURESTIK

A ready-to-use acrylic based non-sag, quick grab, type 1 adhesive for adhering tile, stone and mosaic tile on interior walls.

- Economical and ready-to-use formula
- Non-sag
- Excellent workability

Item Code	Product	Size
1870	ME 136 Surestik	1 gal. Pail
1871	ME 136 Surestik	3.5 gal. Pail





## PROGROUT

A premium grade latex-based Portland cementitious high performance grout, uniquely formulated for grouting the vast range of ceramic, porcelain, and natural stone tile types, and can be applied within a wide range of service requirements and environmental conditions.

- Color consistent
- Stain resistant and efflorescence free
- For grout joints from 1/16" to 1/2" wide
- Exceeds ANSI A118.7

Item Code	Product	Colors	Size
2573-XXXXX	ME Progrout	21*	25 lb. Bag
*See Grout Color Chart pp. 18-19			



## DURACOLOR SANDED

A professional grade polymer modified Portland cement sanded grout specifically formulated for grouting all types of ceramic and dimensional stone tiles, suitable for both walls and floors in residential and commercial applications.

- Polymer fortified for hard, durable, professional results
- Stain resistant and color consistent
- For 1/8" to 1/2" grout joints
- Exceeds ANSI A118.6

Item Code	Product	Colors	Size
3667-XXXXX	ME Duracolor Sanded Grout	31*	25 lb. Bag
3670-XXXXX	ME Duracolor Sanded Grout	31*	10 lb. Box
*See Grout Color Chart pp. 18-19			



## DURACOLOR NON-SANDED

A professional grade polymer modified Portland cement non-sanded grout specifically formulated for grouting all types of ceramic and dimensional stone tiles, suitable for both walls and floors in residential and commercial applications.

- Polymer fortified for hard, durable, professional results
- Stain resistant and color consistent
- For grout joints up to 1/8"
- Exceeds ANSI A118.6

Item Code	Product	Colors	Size
3668-XXXXX	ME Duracolor Non-Sanded Grout	31*	10 lb. Box
3669-00010	ME Dry White Grout	White	25 lb. Bag
*See Grout Color Chart pp. 18-19			





## INTEGRA

An all-in-one thin set and grout, Integra is ideal for installing mosaics and glass tile on walls and floors without concerns about thinset "bleed through" because it is used for both setting and grouting the tile assembly.

- Non-abrasive all-in-one thin set and grout
- Color consistent – Thin set and grout are the same color
- Specifically designed for glass and mosaic tiles on floors and walls
- Exceeds ANSI A118.4 and A118.6

Item Code	Product	Colors	Size
1815-XXXXX	ME Integra	8*	25 lb. Bag

*\*See Grout Color Chart pp. 18-19*



## PRO EPOXY

A three-component system consisting of a resin and hardener that is combined with colored sand to fill joint widths from 1/8" to 3/8". Pro Epoxy offers maximum resistance to staining and is consistent in color.

- Chemical and stain resistant
- Color consistent
- Easy to apply and cleans up easily with water
- Exceeds ANSI A118.3

Item Code	Product	Colors	Size
1841-XXXXX	ME Pro Epoxy Commercial Kit	20*	2 gal. Pail
1842	ME Pro Epoxy Parts A & B		1 gal. Pail
1843-XXXXX	ME Pro Epoxy Part C (Colored Sand)	20*	11 lb. Box

*\*See Grout Color Chart pp. 18-19*



## COLORED CAULKING

An exceptional, one-part siliconized acrylic based caulking compound that is mold and mildew resistant. Available in both a sanded and smooth (non-sanded) formulation color coordinated to all of Merkrete Grout colors.

- Maximum joint width and depth should not exceed 1/4"
- Designed for use around tubs and sinks with sanded grout
- Use where horizontal and vertical surfaces meet

Item Code	Product	Colors	Size
1748-XXXXX	ME Color Caulk Sanded	31*	10.3 oz. Tube
1749-XXXXX	ME Color Caulk Smooth	31*	10.3 oz. Tube

*\*See Grout Color Chart pp. 18-19*



## MK 100% SILICONE CAULK

A high performance commercial grade 100% Silicone Caulk, developed for use as a caulk in coves, corners and changes in plane with interior, exterior or submerged applications.

- For interior and exterior use with tile or stone
- Flexible material for use on expansion joints
- Suitable for wet and submerged areas
- ASTM C920 / C794

Item Code	Product	Colors	Size
1785-XXXXX	ME 100% Silicone Caulk	11*	10.3 oz. Tube

*\*See Grout Color Chart pp. 18-19*



## 626 PRIMER

A thin section two-component primer composed of a modified elastomeric copolymer and cementitious filler powder. It provides a water resistant bond coat primer that adheres to most difficult to bond substrates on practically any form or irregular shape.

- Bonds to most surfaces
- Water resistant surface
- Thin section does not interfere with elevations
- Ideal for underlayments, membranes and thin sets

Item Code	Product	Size
1831	ME 626 Primer Filler	40 lb. Bag
1832	ME 626 Primer	5 gal. Pail
1833	ME 626 Primer Kit	Filler/15 lb. Bag Primer/1 gal. Pail



## 101 OVERSPRAY PRIMER

A primer and bonding agent for underlayments before the installing of Merkrete's waterproof and crack isolation membranes under ceramic, tile and stone.

- Reduces porosity factor
- Increases bond on most of substrates

Item Code	Product	Size
1836	ME 101 Overspray Primer	2 gal. Pail
1837	ME 101 Overspray Primer	5 gal. Pail



## UNDERLAY SLU PRIMER

A uniquely formulated emulsion that must be applied to all substrates prior to the application of Merkrete's Underlay SLU to achieve proper bond.

- Increases bond strength
- Inhibits rapid water loss
- Easy to apply

Item Code	Product	Size
1883	ME Underlay SLU Primer	1 gal. Jug







## BURST

Burst Add-A-Pak is a powerful additive used to give Portland cement products a Burst of accelerant for faster set times. It can be used to help speed up work times in most any Portland cement products such as mud beds, masonry mortars, underlayments, thin sets and grouts.

- Easy to use, powerful additive that accelerates set time
- Does not affect grout performance characteristics
- Excellent for repair work

Item Code	Product	Size
2521	ME Burst Accelerator	1 lb. Bag



## 150 LATEX

A compounded and stabilized latex additive used to improve bond strength, water resistance, compressive strength and other physical properties of cement/sand mixes and grouts.

- Improved adhesion to both old and new surfaces
- Reduces cracking of grout joints
- Resistance to water infiltration

Item Code	Product	Size
1696	ME 150 Latex	1 gal. Jug



## MERKRETE FABRICS

Merkrete's reinforcing Fabrics are a strong, absorbent, polyester reinforcing fabric for use with Hydro Guard waterproofing membranes.

Item Code	Product	Size
1761	Fabric Type 2 (1300 sq. ft.) Kit	1 Roll 36" x 405' + 1 Roll 8" x 165'
1762	Fabric Type 2 (280 sq. ft.) Kit	1 Roll 36" x 75' + 1 Roll 8" x 90'
1766	Fabric Type 2 (Base Roll)	1 Roll 36" x 405'
1769	Fabric Type 2 (Base Roll)	1 Roll 8" x 165'
1770	Fabric Type 2 (Base Roll)	1 Roll 8" x 90'
1771	Burlap Type 3 (10")	1 Roll 300 linear ft.
1772	Burlap Type 3 (40")	1 Roll 1000 linear ft.

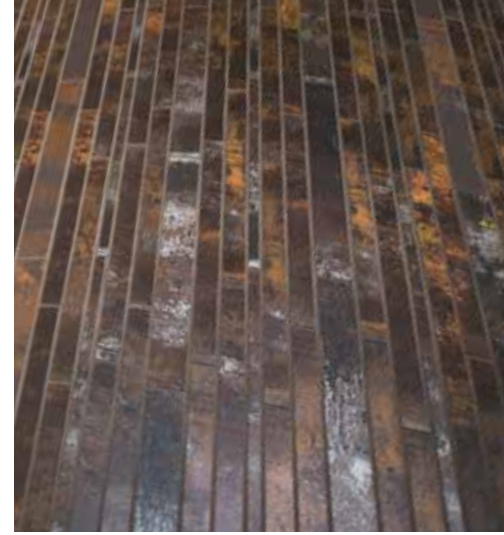


## REVIVE

A pigmented water-based urethane acrylic grout stain and sealer designed to revive grout.

- Water-based urethane acrylic grout stain and sealer
- For revitalizing or changing color of older sanded or non-sanded grouts
- Designed to help protect against moisture and staining

Item Code	Product	Colors	Size
1862-XXXXX	ME Revive	30	8 oz. Bottle
*See Grout Color Chart pp. 18-19			



## GROUT SEALER

A penetrating silicone sealer for new or old Portland cement grout. A water-based, silicone resin designed to protect grout surfaces from stains and water.

- Suitable for porous, absorbent masonry, clay, stone, marble and Portland cement grouts
- Protects grout surfaces from stains and water
- Quick penetration
- Maintains a natural look

Item Code	Product	Size
1794	ME Grout Sealer	1 gal. Jug
1795	ME Grout Sealer	1 qt. Jug



## PU CAULKING

A one part, non-staining, polyurethane joint sealant that cures at ambient temperature to a firm, flexible tear-resistant rubber.

- Use for filling cracks prior to applying a waterproof or crack isolation membrane
- Interior and exterior
- Bonds to most surfaces

Item Code	Product	Size
1741	ME Caulking PUC 1000	10.5 oz. Tube



# GROUT SOLUTIONS

## Coverage Charts

### PROGROUT / INTEGRA / DURACOLOR

Per 25 lb. Bag

NOMINAL TILE SIZE	JOINT WIDTH			
	1/8"	1/4"	3/8"	1/2"
2" x 2" x 1/4"	93	48	33	26
4" x 4" x 3/8"	122	62	42	32
4" x 8" x 3/8"	162	82	55	42
6" x 6" x 3/8"	182	92	62	47
6" x 8" x 3/8"	208	105	70	53
8" x 8" x 3/8"	242	122	82	62
10" x 10" x 3/8"	302	152	102	77
12" x 12" x 3/8"	362	182	122	92
15" x 15" x 3/8"	452	227	152	114
16" x 16" x 3/8"	482	242	162	122
18" x 18" x 3/8"	542	272	182	137
20" x 20" x 3/8"	602	302	202	152

### DURACOLOR Non-Sanded

Per 10 lb. Box

NOMINAL TILE SIZE	JOINT WIDTH		
	1/16"	3/32"	1/8"
1" x 1" x 1/4"	53	36	27
2" x 2" x 1/4"	103	69	53
4" x 2" x 1/4"	137	92	69
4" x 4" x 3/8"	137	92	69
4" x 8" x 3/8"	182	122	91
6" x 6" x 3/8"	205	137	103
8" x 8" x 3/8"	272	182	137
8" x 10" x 1/2"	227	152	114
10" x 10" x 3/8"	340	227	171
12" x 12" x 3/8"	408	272	205
15" x 15" x 3/8"	510	340	256

### PRO EPOXY

Per 1 gal. Unit

NOMINAL TILE SIZE	JOINT WIDTH		
	1/8"	1/4"	3/8"
4" x 8" x 1/2"	72	36	26
6" x 6" x 3/8"	106	58	40
6" x 6" x 1/2"	80	42	28
8" x 8" x 3/8"	142	72	58
12" x 12" x 3/8"	210	106	72
12" x 12" x 1/2"	156	80	54
12" x 12" x 5/16"	84	42	28
13" x 13" x 3/8"	228	116	78
16" x 16" x 3/8"	280	142	96
18" x 18" x 3/8"	312	156	106
20" x 20" x 3/8"	344	176	118

Coverages are approximate and may be reduced based on project conditions, actual tile size, waste and other factors. Please reference Merkrete's Grout Calculator for other tile sizes and more details.



# GROUT COLOR COLLECTION

Today, tile sizes, style, color, composition and areas of use are constantly evolving, and so must the installation products to meet these demands. Using the correct installation product is vital to the success of every tile installation and selecting the right grout is just as important.

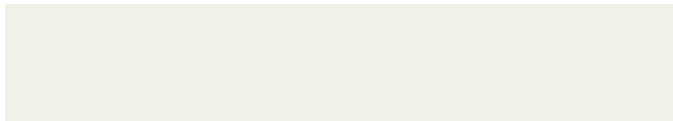
## GROUT COLORS

All colors available in Duracolor Sanded and Non-Sanded, Colored Caulking, and Revive.

**PG** ProGrout **E** Pro Epoxy **I** Integra **SC** 100% Silicone Caulk



00010 BRIGHT WHITE



00011 SNOW WHITE **PG I SC**



00012 NAVAJO WHITE **PG E SC**



00015 SWISS COFFEE **I**



00017 BONE **PG E I**



00018 CREAM **PG E SC**



00021 CANVAS **PG E SC**



00023 LATTE **PG SC**



00024 CHAMOIS **PG E**



00025 TUMBLEWEED **PG E I SC**



00030 SILVER **PG E I SC**



00032 LIGHT TAUPE **E**



00034 RIVER ROCK **E SC**



00035 NATURAL GRAY **PG E**



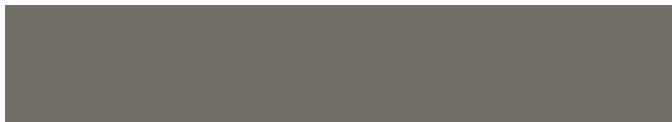
00038 GRAY **PG E I**



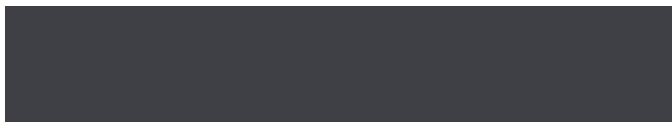
00057 HARVEST **PG**

00063 CARMEL **E**

00134 NEW ADOBE

00137 AZTEC **PG E**00162 TRUE TAUPE **PG E**

00175 DARK CHOCOLATE

00178 COCO **PG E**00525 BLACK SAPPHIRE **PG E I SC**

00572 NEW DENIM



00583 ANCIENT JADE

00071 SANDSTONE **PG E**00145 MOCHA **PG E**

00147 ESPRESSO

00150 SANTA FE **PG E**00153 BUCKSKIN **PG E I SC**00191 TERRACOTTA **PG E**

Sample colors shown are approximate to the final grout color. Final installed grout color may vary due to job conditions, tile porosity, mixing ratio, sealers, installation methods, temperature, or individual batches. Use grouts with the same batch number whenever possible. Different batch numbers should be dry blended together to obtain color uniformity. Follow ANSI A108.10 grouting practices. Please contact Customer Care Department for further questions at 877-547-8822.

# PROJECT GUIDE SELECTOR

Product	Main Feature	ANSI			Substrate								Application Area			
		A108.1B	A118.10	A118.12	Concrete or Masonry	Cementitious Backer Units	Masonry Block with Mortar Joins (CMU)	Gypsum Wall Board and Underlayments (i.e) Maxxon	Exterior Grade Plywood (EGP)	Existing Tile, Marble and Terazzo	Existing Vinyl	Cutback Adhesive	Floors	Walls	Floors	Walls
Surface Preparation																
ProPatch Plus	Feather edge to 3/4"	●	□	□	●	○	○	○	●	□	○	○	●	●	●	●
ProPatch XF	Feather edge to 1/4"	●	□	□	○	○	○	○	○	○	○	□	●	□	●	□
ProPatch AL1	Feather edge to 1"	●	□	□	●	●	●	●	●	●	●	□	●	□	●	□
Underlay C	1/4" to 3" thickness	●	□	□	○	○	○	○	○	○	○	○	●	□	□	□
Underlay RS	Rapid Set	●	□	□	◐	◐	◐	◐	◐	◐	◐	◐	●	□	□	□
Underlay SLU	Self Leveling	●	□	□	◐	◐	□	□	◐	◐	◐	◐	●	□	□	□
Waterproofing and Crack Isolation																
Hydro Guard 1	Waterproofing and crack isolation up to 1/8"	□	●	●	◐	◐	◐	◐	◐	◐	◐	◐	●	●	●	○
Hydro Guard 2000	Heavy duty waterproofing and crack isolation up to 1/8"	□	●	●	●	●	●	●	●	●	●	●	●	●	●	●
Hydro Guard SP1	Fast drying waterproofing and crack isolation up to 1/8"	□	●	●	●	●	●	●	●	●	●	●	●	●	●	●
Fracture Guard	Crack isolation up to 1/8"	□	□	●	◐	◐	◐	◐	◐	◐	◐	◐	●	●	●	●
Fracture Guard FD	Fast drying crack isolation up to 1/8"	□	□	●	◐	◐	◐	◐	◐	◐	◐	◐	●	●	●	●

○ Good    ● Better    ● Best

## Suitable Substrates For Merkrete Adhesives

- Brick Masonry
- Cement Backer Board
- Cement Mortar Beds
- Cement Plaster
- Ceramic Tile and Stone
- Concrete Masonry
- Exterior Grade Plywood
- Gypsum Wallboard
- Merkrete Waterproofing
- Merkrete Crack Isolation

For further information, please contact our technical department at (800) 226-2424 or visit our website for specific product information: [www.merkrete.com](http://www.merkrete.com)

[illegible]



## WARRANTY

Merkrete provides both product and system warranties that guarantee your installation for up to a lifetime. Our comprehensive warranties provide the peace of mind that professionals and end-users trust and deserve.

## CUSTOMER SATISFACTION

Behind every Merkrete product is revolutionary research, groundbreaking development and unsurpassed commitment to quality, customer service, technical assistance and green innovations.

## INNOVATION

Merkrete, a division of ParexGroup, is a global company that is highly invested in Research and Development. Throughout several R&D facilities worldwide, key employees are involved in the development of new technologies and product innovations, providing our customers with state-of-the-art installation solutions throughout the building products industry. Additional efforts focus on green initiatives and environmentally sustainable solutions. Continually on the cutting edge of innovation, Merkrete has produced such innovations as:

- DLT – Dustless Technology - produces approximately 80% less dust than ordinary thin sets designed to improve indoor air quality, promote cleaner working conditions and reduce mess.
- Mold Shield technology providing product protection in select Merkrete products from mold and mildew.
- Rapid Setting technology offers early strength, excellent workability, fast curing, and excellent durability to Merkrete's fast-setting line of products.



Through high-touch, personal service, Merkrete offers builders and contractors trusted solutions and expertise across a full line of innovative tile and stone installation systems. From liquid waterproofing membranes to fast-drying products and dustless dry mixes, you can trust Merkrete to have what you need to get the job done.

**Register for free on the ParexUSA Academy to learn more about tile and stone installation techniques:**



[academy.parexusa.com](http://academy.parexusa.com)

**Visit us on the web:**



[www.merkrete.com](http://www.merkrete.com)

**Connect with us on social media:**



**Download the official Merkrete app:**





**Corporate Office**  
ParexUSA, Inc.  
4125 E. La Palma Ave., Suite 250  
Anaheim, CA 92807  
[www.merkrete.com](http://www.merkrete.com)  
866-516-0061  
Tech Support: 800-226-2424

© ParexUSA, Inc., July 2017 • MK CAT 0717